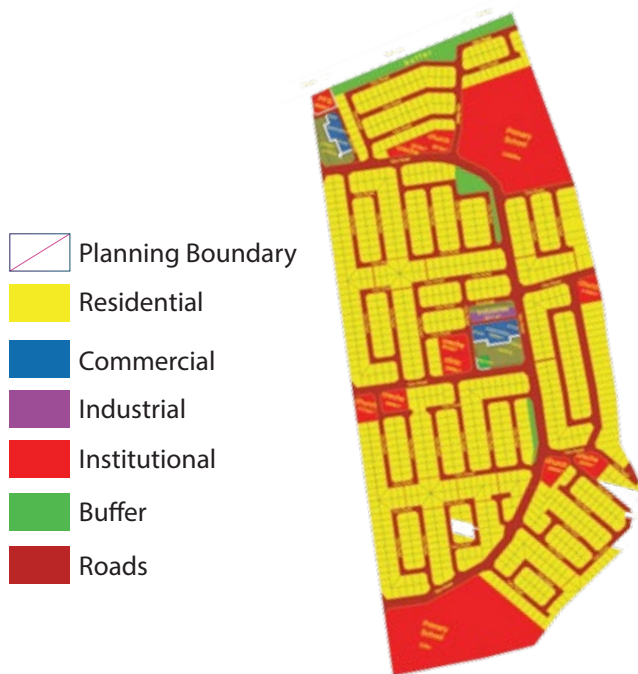
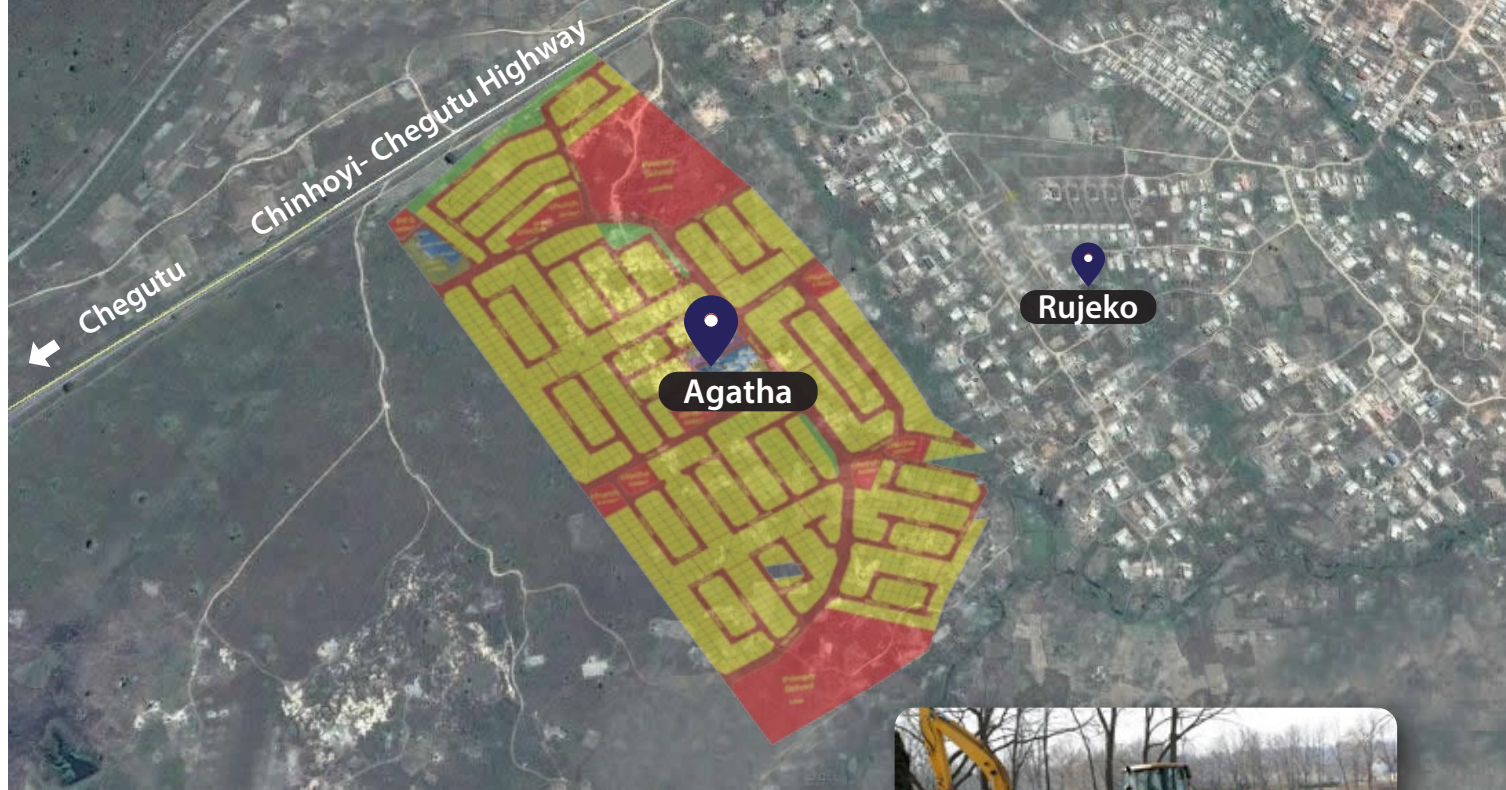


Developing **Land**, Delivering **Housing**,
 Developing **Infrastructure**, & Creating **Wealth**.



This new exciting housing development offers more than 1000 housing stands averaging 250m². Conveniently planned to access social services such as schools, clinics, churches, crèches, retail and service industrial shops. The residential development is only 6km from Chinhoyi Town, along the Chinhoyi- Chegutu Highway. This development is adjacent to Rujeko Suburb.



DETAILS OF THE DEVELOPMENT

- over 1,000 stands available
- each unit with own title deed

SPECIFICATIONS

- over 1000 stands
- 1 petrol filling station
- 1 primary school
- 4 crèches
- 1 clinic
- 19 shops
- 17 light industrial stands



COST

	Cash	Credit
Average 250m ²	5,000	5,500
*Deposit \$1,000, Balance over 24 months \$187.50		
Average 300m ²	6,000	6,600
*Deposit \$1,000, Balance over 24 months \$233.33		



About Us

Royale Developments (RoyDev) is a company that arose from the systemic gathering of skills targeted at the successful conceptualisation, development, undertaking and implementation of developmental and infrastructure projects. While our roots lie in land and project development, we are uniquely placed to undertake developments of all magnitudes in different spheres including infrastructure, such as power generation, power lines, roads, dams etc.

Contact Us

We are excited about Property and Infrastructure development and have put a significant proportion of our thrust into achieving shelter for all.



We gather the best skills (both internal and external) and apply them to exceptional opportunities, with the view and result that optimal returns and value for investors, clients and stakeholders.

Royale Developments
Dominion Park
No 37 Marlborough Drive, Marlborough
PO Box GT 6, Graniteside, Harare, Zimbabwe

+(263) 864 411 9373/4/5/6
sales
0782 884 721/5

info@royaleddevelopments.com
www.royaleddevelopments.com

**ON TIME
ON COST
ON QUALITY**

www.royaleddevelopments.com